

# PRODUCT DATASHEET

## HWL 160 W 240 V E27

HWL | Mercury mixed-light lamps for open and enclosed luminaires



---

### AREAS OF APPLICATION

- Factory and hall lighting with low-cost installations
- Upgrading light fittings with high-wattage incandescent lamps
- Factories and workshops
- Pedestrian zones, public squares
- Suitable for use in open and enclosed luminaires
- Outdoor applications only in suitable luminaires

---

### PRODUCT BENEFITS

- HWL lamps can be used instead of incandescent lamps because they do not need either control gear or igniters

## TECHNICAL DATA

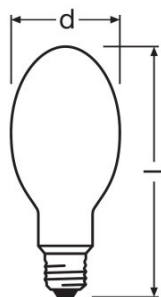
### Electrical data

Nominal wattage	160.00 W
Rated wattage	170.00 W
Lamp current	0.8 A
Nominal voltage	240 V

### Photometrical data

Rated lamp efficacy (standard condition)	18 lm/W
Rated luminous flux	3100 lm
Color rendering index Ra	61
Color temperature	3500 K
Rated LLMF at 2,000 h	0.96
Rated LLMF at 4,000 h	0.93
Rated LLMF at 6,000 h	0.90
Rated LLMF at 8,000 h	0.80
Luminous flux	3100 lm

### Dimensions & weight



Diameter	76.0 mm
Length	168.0 mm
Product weight	63.00 g

### Temperatures & operating conditions

Maximum permitted outer bulb temperature	310 °C
Maximum permitted base edge temperature	210 °C

### Lifespan

Rated lamp survival factor at 2,000 h	0.95
---------------------------------------	------

Rated lamp survival factor at 4,000 h	0.89
Rated lamp survival factor at 6,000 h	0.82
Rated lamp survival factor at 8,000 h	0.76
Operation mode LLMF/LSF	50 Hz

Additional product data

Base (standard designation)	E27
Design / version	Coated
Mercury content	17.7 mg

Capabilities

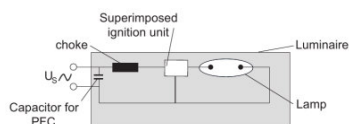
Dimmable	No
Burning position	hs30
Enclosed luminaire required	No

Certificates & standards

Energy efficiency class	D
Energy efficiency class	D
Energy consumption	193 kWh/1000h

Country-specific categorizations

ILCOS	QB/R-160-E240-E27-76/168
-------	--------------------------



Circuit diagram

LOGISTICAL DATA

Product code	Product description	Packaging unit (Pieces/Unit)	Dimensions (length x width x height)	Volume	Gross weight
4008321001818	HWL 160 W 240 V E27	Shipping carton box 40	398 mm x 318 mm x 385 mm	48.73 dm <sup>3</sup>	3280.00 g

The mentioned product code describes the smallest quantity unit which can be ordered. One shipping unit can contain one or more single products. When placing an order, for the quantity please enter single or multiples of a shipping unit.

---

**DISCLAIMER**

Subject to change without notice. Errors and omission excepted. Always make sure to use the most recent release.