

# Catalogue No: **RM1A23A50**

## SSR 50A 1PH 24-265VAC SWITCHING 20-280VAC/22-48VDC CONTROL

Timers and Control Relays > General Purpose Relays > Solid State Relays > Carlo Gavazzi Solid State Relays > Hockey Puck Solid State Relays > RM1A Series - Single-Phase - Industrial Load



Representative Photo Only  
(actual product may vary based on configuration selections)

Solid state relay, single phase, industrial, 50A

- Includes direct copper bonding technology for increased life and reliability.
- Long life and noise-free switching makes them ideal replacements for mechanical contactors.
- Complete range of SSR's including with or without a built-in heatsink to suit your custom application requirements.

### SPECIFICATIONS

Product Series	RM
Number of Poles	1
Contact Configuration	1 NO
Input Frequency, Min	45 Hz
Input Frequency, Max	65 Hz
In, Rated Current	50 A
Ie, Rated Operational Current, min	250 mA,min
Icw, Short Time Withstand Current, 10ms (rms)	580 A, 10ms
IΔn, Leakage Current, Max	3 mA
Ie, Rated Operational Current, AC-51, 230V	50 A@230V
Ie, Rated Operational Current, AC-53a, 230V	15 A@230V
Un, Nominal Operational Voltage, AC	230 V AC
Ue, Rated Operational Voltage, AC, min	24 V AC
Ue, Rated Operational Voltage, AC, max	265 V AC
Blocking Voltage, Peak	650 Vp
Voltage Drop, On State, Max	1.6 V
Control Voltage, AC, Min	20 V AC min
Control Voltage, AC, Max	280 V AC max
Control Voltage, DC, Min	22 V DC min
Control Voltage, DC, Max	48 V DC max
Input Current, Max (rms)	20 mA, max rms
Pickup Voltage	18 V
Dropout Voltage	6 V
Response Time (Off → On)	12 ms
Response Time (On → Off)	40 ms
Insulation Voltage, between Input & Output	4000 V AC
Indicator Type	LED
Mounting	Base Mount

# Catalogue No: **RM1A23A50**

## SSR 50A 1PH 24-265VAC SWITCHING 20-280VAC/22-48VDC CONTROL

Timers and Control Relays > General Purpose Relays > Solid State Relays > Carlo Gavazzi Solid State Relays > Hockey Puck Solid State Relays > RM1A Series - Single-Phase - Industrial Load



Terminal Type, Supply	Screw Terminal(s)
Terminal Type, Operational	Screw Terminal(s)
Wire / Conductor Size	4 mm <sup>2</sup>
Wire / Conductor Size (Max)	16 mm <sup>2</sup>
Service Life	100000 cycles
Operating Temperature, Min	-20 °C min
Operating Temperature, Max	70 °C max
Storage Temperature, Min	-40 °C min
Storage Temperature, Max	100 °C max
IP Rating	IP20
Height	58.2 mm
Width	44.8 mm
Depth	28.8 mm
Weight	0.06 kg
Standards Compliance	UL 508 IEC 61000-6-2 IEC 61000-4-2 IEC 61000-4-4 IEC 61000-4-5 IEC 61000-6-4 IEC 61000-4-3 IEC 61000-4-6 IEC 61000-4-11 EN 61000-6-2 EN 61000-4-2 EN 61000-4-4 EN 61000-4-5 EN 61000-6-4 EN 60947-4-3 EN 61000-4-3 EN 61000-4-6 EN 61000-4-11 IEC 60947-4-3
Certifications	CE RoHS C-UR-US CSA CCC C-UR UR

### REFERENCES

IECEX Certificate	-
Supplier Declaration of Conformity:	<a href="#">RM1A23A50_Supplier Declaration of Conformity (SDoC)</a>
Installation Guide:	-
User Manual:	-
Manufacturer Datasheet:	<a href="#">RM1A23A50_Manufacturer Datasheet</a>
Manufacturer Catalogue & Product Selection:	-

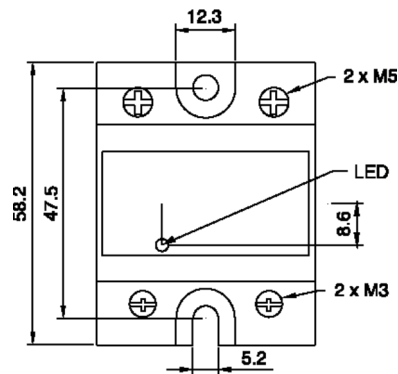
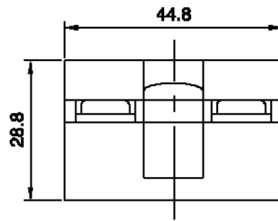
Catalogue No: **RM1A23A50**

**SSR 50A 1PH 24-265VAC SWITCHING 20-280VAC/22-48VDC CONTROL**

Timers and Control Relays > General Purpose Relays > Solid State Relays > Carlo Gavazzi Solid State Relays > Hockey Puck Solid State Relays > RM1A Series - Single-Phase - Industrial Load



**Top/Bottom View**



**Dimension Diagram**