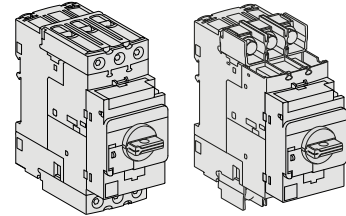


GV3P●●/L●●

GV3P●●6/L●●6



W9 1725608 0211 A11

04/2021

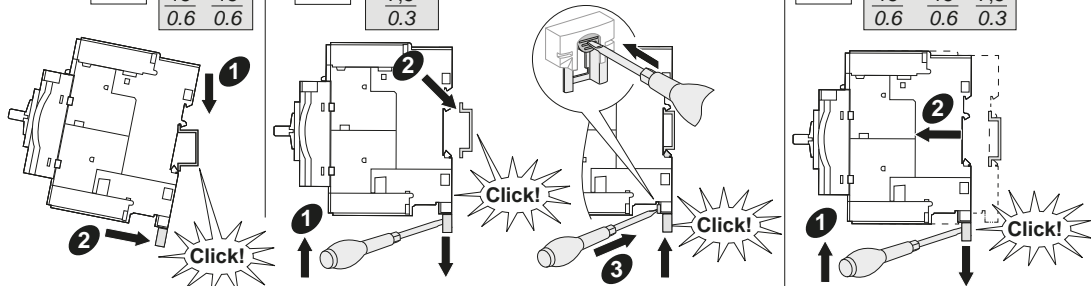
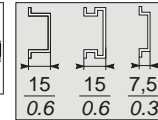
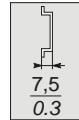
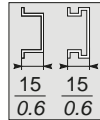
www.se.com

1672548 (GV3P)

**Schneider Electric Limited**  
 Stafford Park 5  
 Telford, TF3 3BL  
 United Kingdom  
 www.se.com/uk

Rail 35 mm → EN 50022, NFC 63015

mm  
in



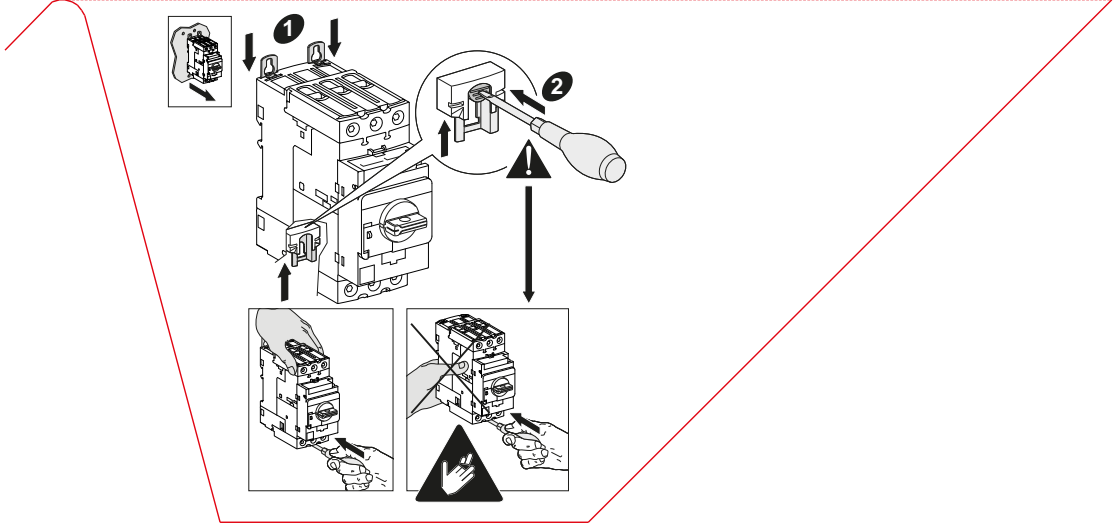
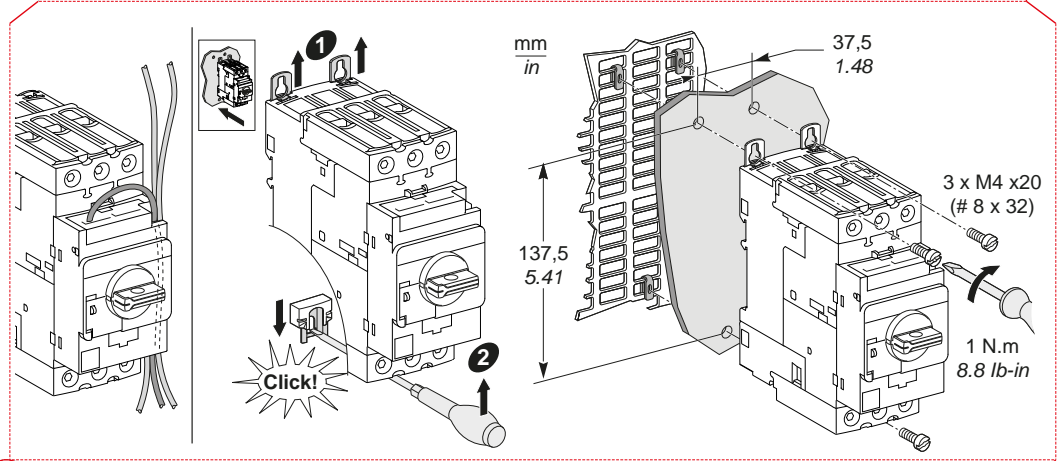
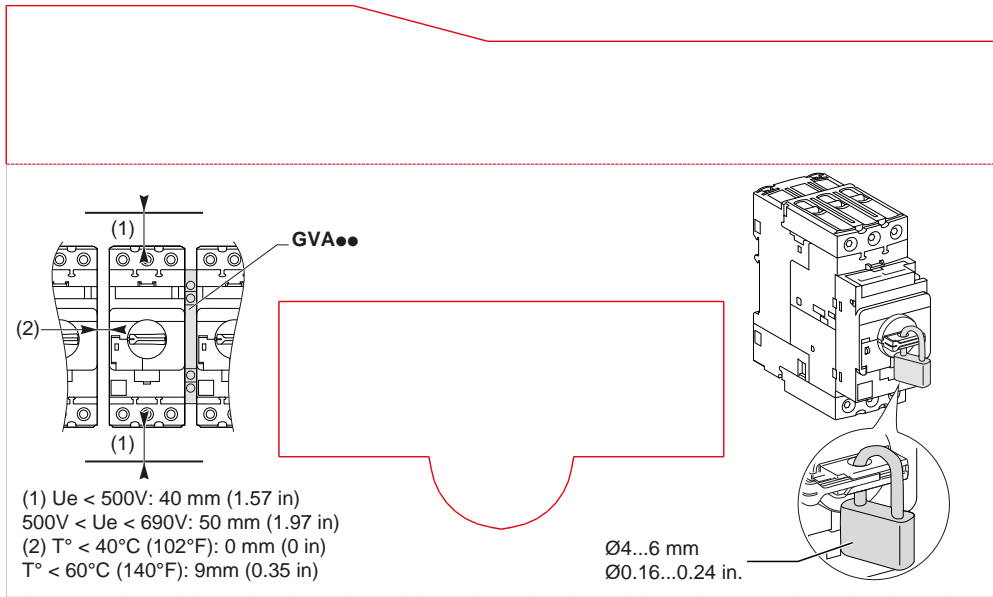
**⚠️ ⚠️ DANGER / PELIGRO / DANGER / 危險**

**HAZARD OF ELECTRIC SHOCK, EXPLOSION, OR ARC FLASH**  
 Disconnect all power before servicing equipment.  
**Failure to follow these instructions will result in death or serious injury.**

**PELIGRO DE DESCARGA ELÉCTRICA, EXPLOSIÓN O DESTELLO DE ARCO VOLTAICO**  
 Desconecte toda la corriente antes de realizar mantenimiento en los equipos.  
**Si no se siguen estas instrucciones se pueden sufrir lesiones graves o incluso la muerte.**

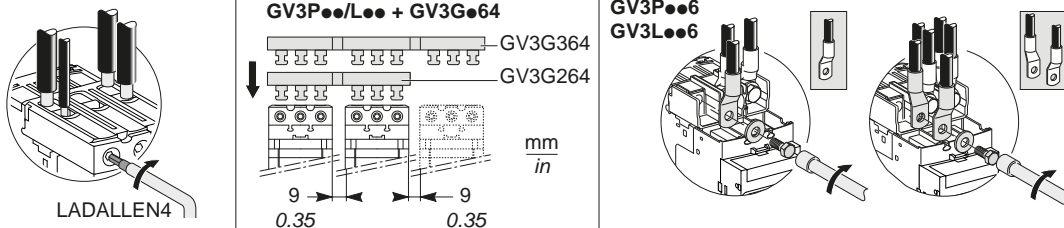
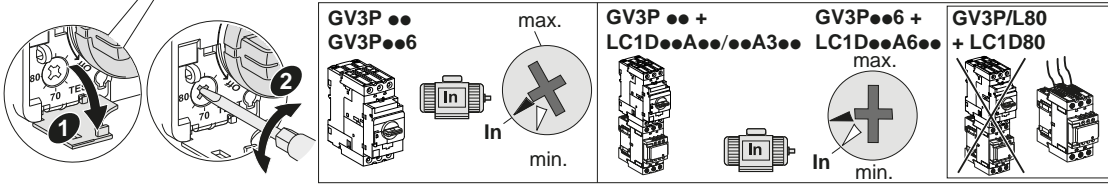
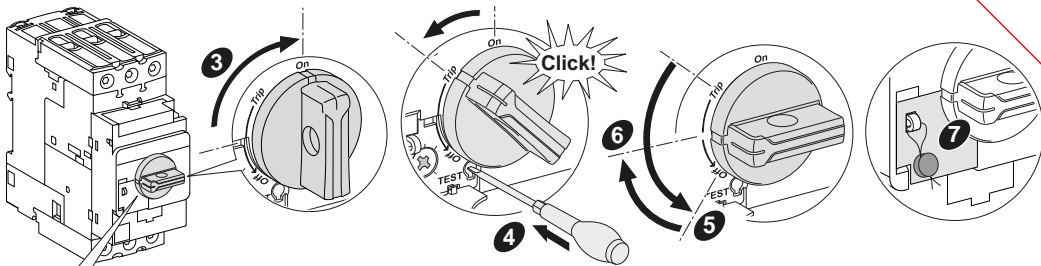
**RISQUE D'ÉLECTROCUTION, D'EXPLOSION OU D'ECLAIR D'ARC ELECTRIQUE**  
 Débranchez tous les circuits d'alimentation avant de procéder à entretien de l'appareil.  
**Le non-respect de ces instructions provoquera la mort ou des blessures graves.**

电击、爆炸或电弧闪光危险  
 在此电力设备上工作时，请先切断所有电源。  
 不遵循上述说明将导致人员伤亡。



**Schneider Electric Industries SAS**  
 35, rue Joseph Monier - CS 30323  
 F - 92506 Rueil Malmaison Cedex  
 www.se.com/contact

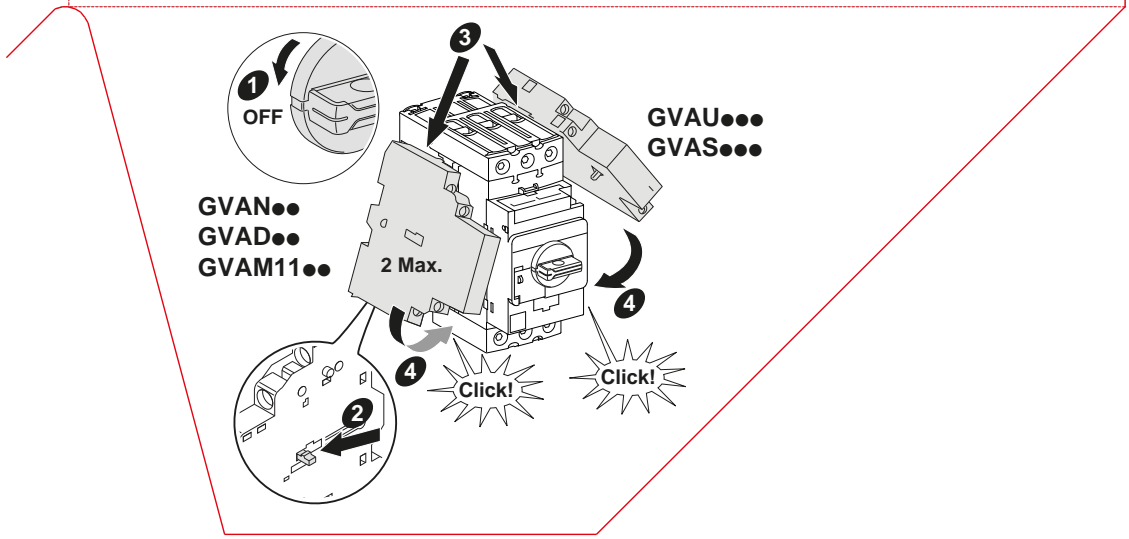
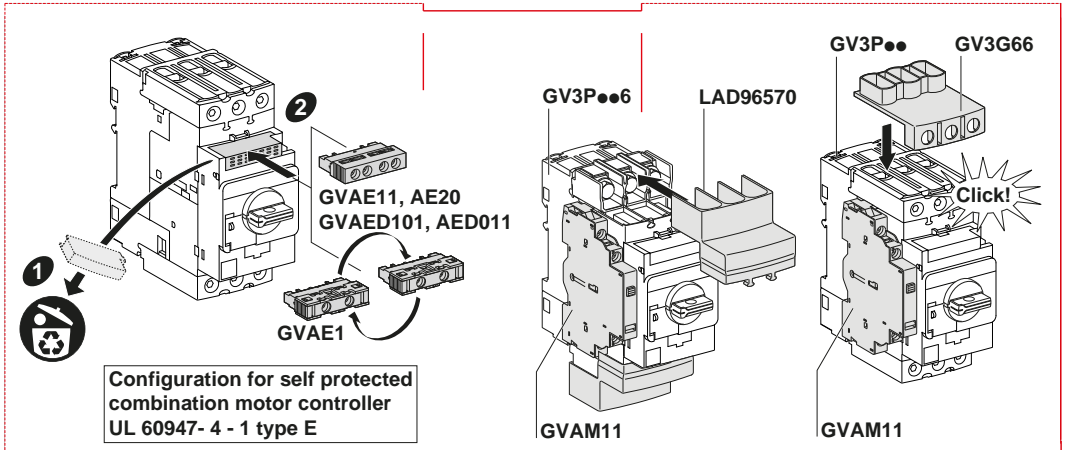
© 2021 Schneider Electric  
 All rights reserved.

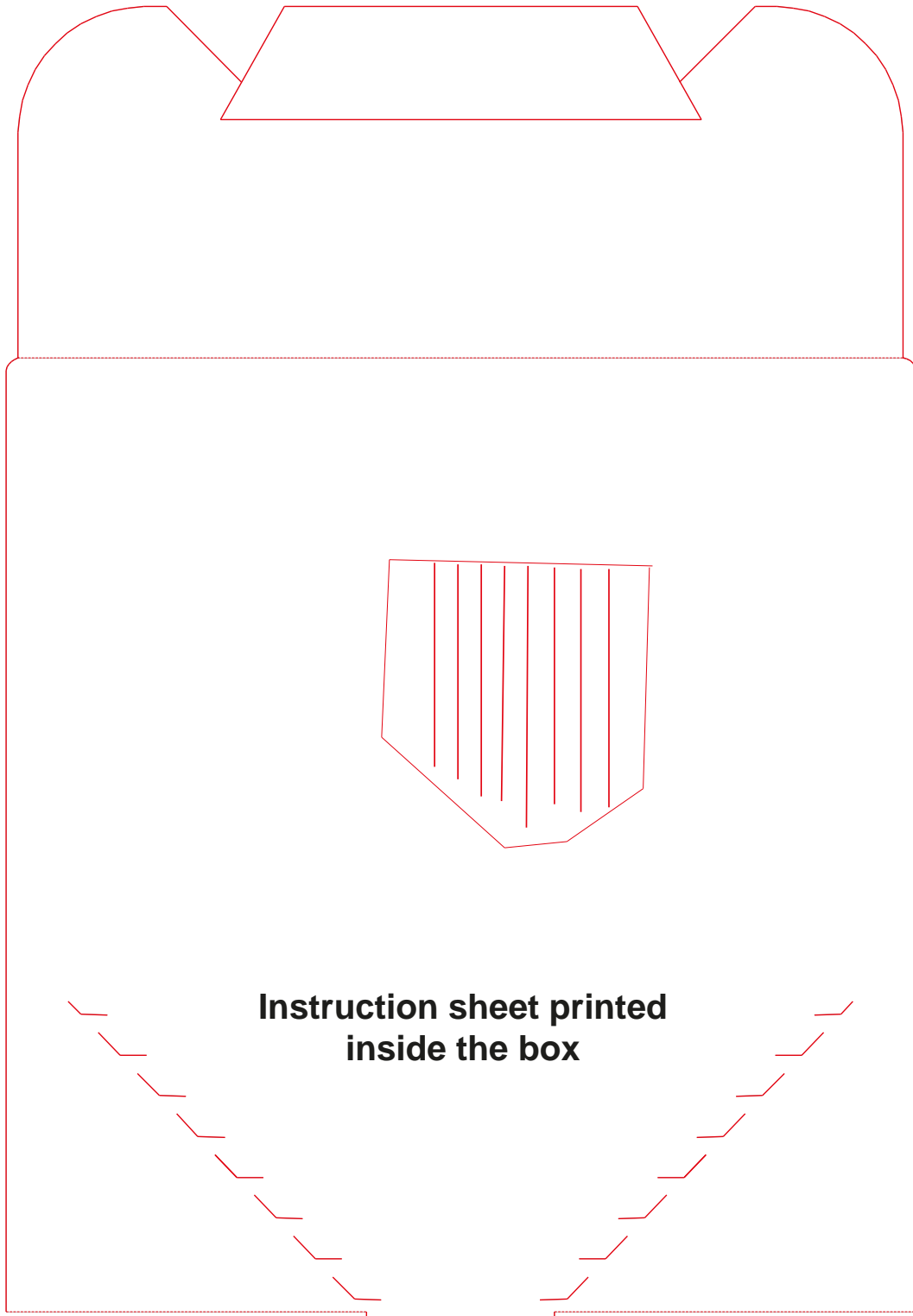


GV3P●● GV3L●●						LADALLEN4 Ø 4 mm
	16 mm	1...25 mm <sup>2</sup>	2 x 1...25 mm <sup>2</sup>	5 N.m		
	16 mm	35 mm <sup>2</sup>	1 x 1...25 mm <sup>2</sup> + 1 x 35 mm <sup>2</sup>	8 N.m		
	0.63 in	AWG 16...2	1 x AWG 16...4 + 1 x AWG 2	70 lb-in		

GVA●●						Ø 2 mm 0.08 in
	10 mm	1...2.5 mm <sup>2</sup>	0.75...2.5 mm <sup>2</sup>	0.75...1.5 mm <sup>2</sup>	1.4 N.m	
	0.4 in	AWG 16...12	AWG 20...12	AWG 20...16	12.5 lb-in	

GV3P●●6 GV3L●●6					6 N.m 54 lb-in	10
	e	L	d	L'		
	mm	in				
	e	≤ 6	≤ 0.24			
	L	≤ 13.5	≤ 0.53			
L'	≤ 16.5	≤ 0.65				
d	≤ 10	≤ 0.40				
D	> 6	> 0.24				





**Instruction sheet printed  
inside the box**