

Catalogue No: **PC 191913 G**

TERMINAL BOX SOLID PC IP66/67 H190 x W190 x D130mm GREY

Enclosures and Climate Control > Standard Enclosures > Terminal Boxes > Thermoplastic Terminal Boxes > Solid Range > Solid PC Enclosures with Grey Cover (Mounting Plates Sold Separately)



Enclosure Terminal Box Solid PC IP66/67 Grey W190xH190xD130mm

- IP66/67 rated, PC: IK08 (side surface) IK09 (front surface), ABS: IK08
- Halogen free, impact resistant polycarbonate or ABS
- Totally insulated, polyurethane gasket and polyamide screws
- Grey RAL 7035 coloured base with option of transparent or grey cover
- RoHS compliant

Representative Photo Only
(actual product may vary based on configuration selections)

SPECIFICATIONS

| | |
|------------------------------|---|
| Product Series | Solid |
| Material, Body / Housing | PC (Polycarbonate) material |
| Height | 188 mm |
| Width | 188 mm |
| Depth | 130 mm |
| Depth, Base | 100 mm |
| IK Rating, Side | IK08 |
| IK Rating, Front | IK09 |
| IK Rating | IK09 |
| IP Rating | IP66 IP67 |
| Colour, Body / Housing | Light Grey (RAL 7035) colour |
| Colour, Cover | Grey colour |
| Electrical Insulation | Totally insulated |
| Halogen Free | Yes |
| UV Rating | UL 508 |
| Flammability Rating (UL94) | UL 746C |
| Glow Wire Rating | IEC 60695-2-1 960°C |
| Material, Gasket / Seal | PUR / PU material |
| Material, Screws / Fastening | Polyamide Screws/Fastening |
| Standards Compliance | EN 60529 EN 60950 EN 62208:2003 EN 62262 UL 508 UL 746C IEC 60695-2-1 960°C |
| Certifications | GOST-R RoHS |

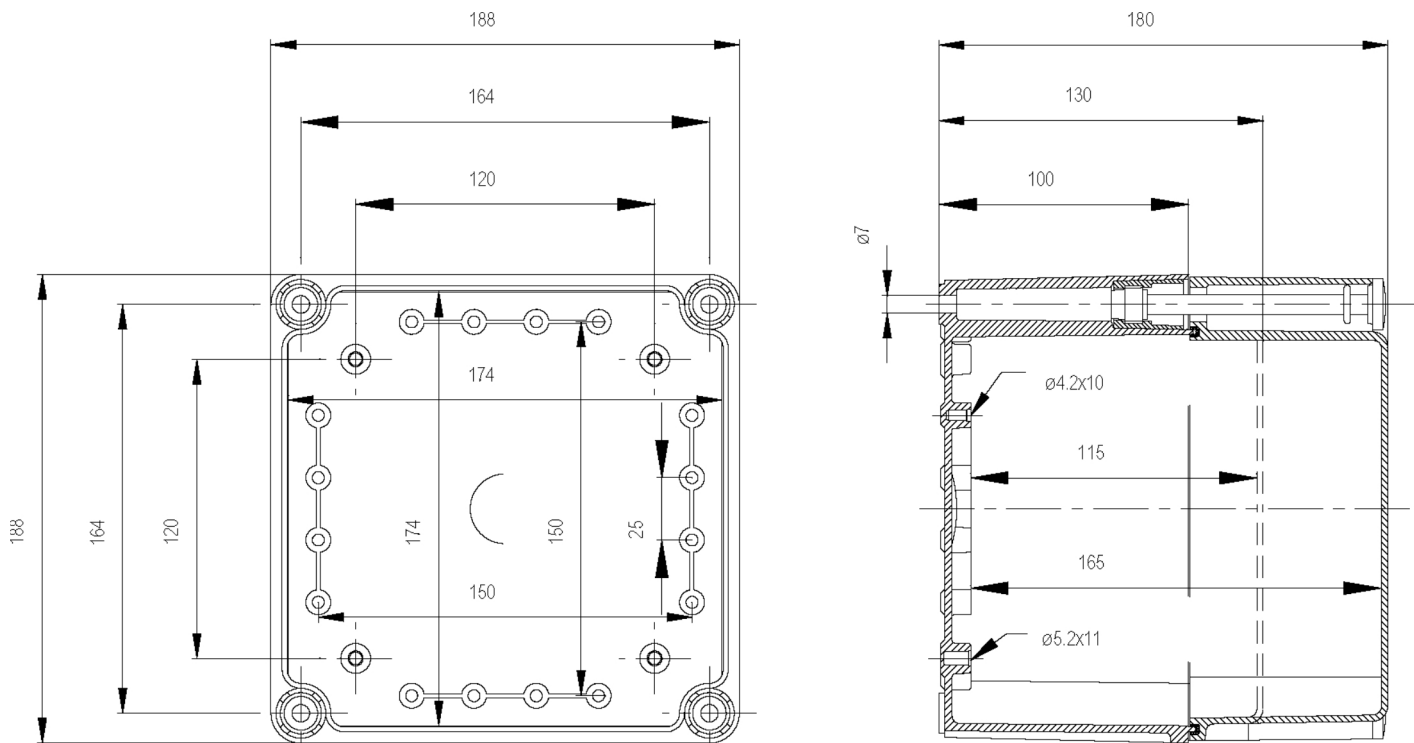
Catalogue No: **PC 191913 G**

TERMINAL BOX SOLID PC IP66/67 H190 x W190 x D130mm GREY

Enclosures and Climate Control > Standard Enclosures > Terminal Boxes > Thermoplastic Terminal Boxes > Solid Range > Solid PC Enclosures with Grey Cover (Mounting Plates Sold Separately)



| REFERENCES | |
|---|---|
| IECEX Certificate | - |
| Supplier Declaration of Conformity: | - |
| Installation Guide: | - |
| User Manual: | - |
| Manufacturer Datasheet: | - |
| Manufacturer Catalogue & Product Selection: | - |



Dimension Diagram